

J+J

Brand

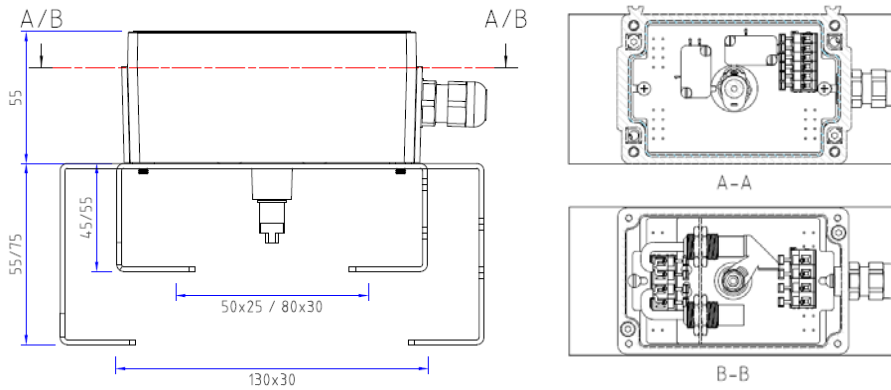
Switch box dimensions



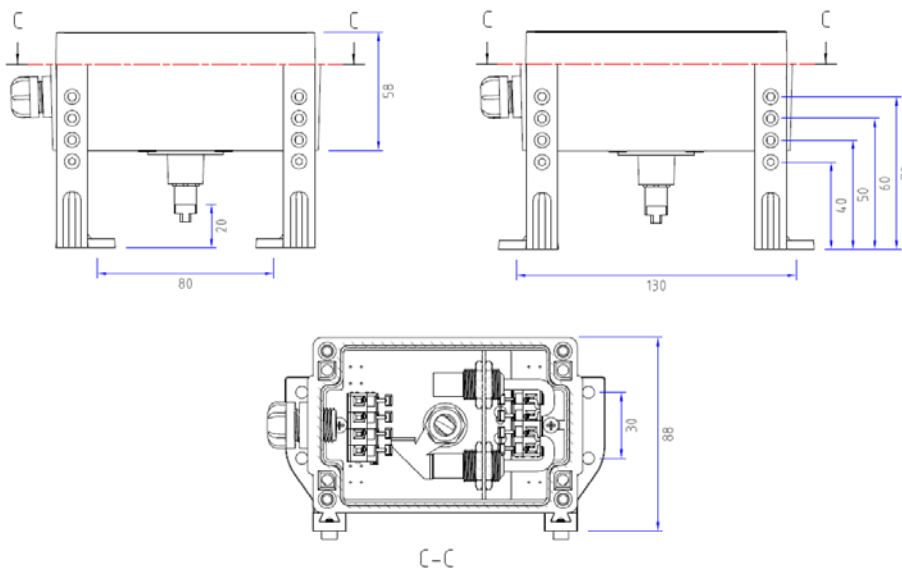
Doc: LSB-DIM/02

June 2007

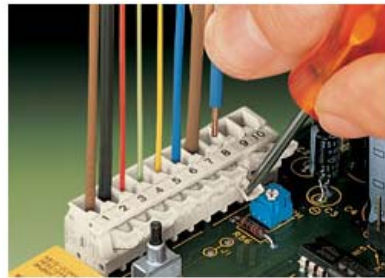
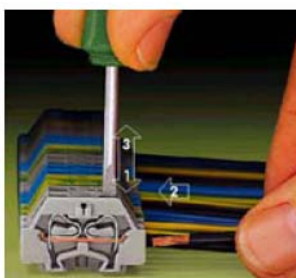
Dimensions for safe area polycarbonate, or safe area switch boxes with stainless shaft and Namur bracket



Dimensions for safe area polycarbonate universal switch box with plastic shaft and bracket



All terminals are push-in for speed of installation.



Quick guide to the CH-air A Type actuator standard features :

Robust rack and pinion construction

High accuracy machining of components

ATEX Ex II 2 GD approved for use in hazardous areas

CE Approved

Guaranteed for 1,000,000 cycles

Balanced air & spring strokes in spring return version

Safe to dismantle for routine maintenance

Compliant with all actuator standards

Accessories are easy to mount

Hard anodised aluminium body

ENP coated option (Extra cost)

Teflon® coated option (Extra cost)

Stainless steel version (Extra cost)