

PNEUMATICALLY OPERATED 3 WAY FLANGED BALL VALVE



Typical information sheet

Features:

- > Valve 16 Bar rated
- > Blow out proof trunion stem
- > Valve 316SS or cast iron
- > Valve available L or T port
- > Available double acting or spring return
- > Ends flanged PN16 or ASA150
- > Robust & reliable

TYPE 8311 / 8312

General:

Utilising a flanged 3 way valve with either L or T ported ball, this compact valve package provides excellent reliability in service.

Fitted with a pneumatic actuator the package is available in either double acting (air open, air close) or failsafe (air open, spring close).

The actuator conforms to international standards and allows simple fitting of position confirmation / control devices and pilot solenoids.

Specifications:

Valve body	316SS / Cast Iron
Valve ball + Stem	316SS
Ball seats	PTFE
Stem seals	PTFE
Valve pressure range	16 BAR
Valve temp. limits	-20C to +150C **
Air supply to actuator	Min 5.5 bar, max 8 bar

Applications:

Water, oil, & some (316SS) or non (Cast Iron) corrosive media, subject to compatibility with wetted parts in contact with media.

Actuators sized using maximum differential of 6 bar wet service – if this is to be exceeded, or duty is dry, call to check actuator sizing.

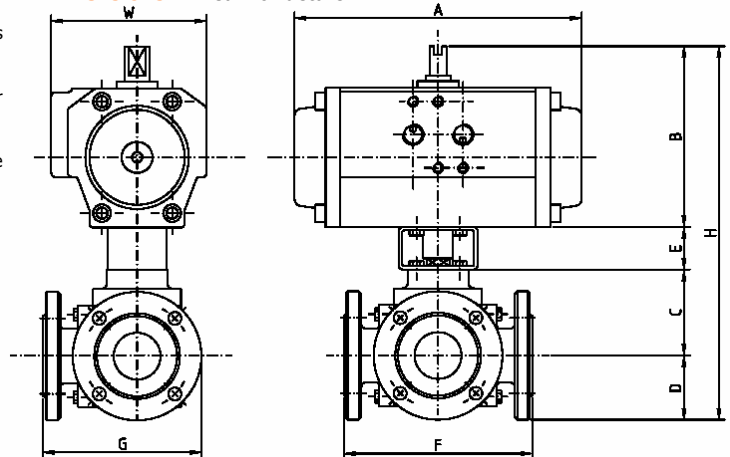
** Actuator temperature limit is +80C. For applications

Installation:

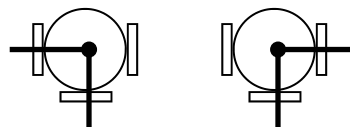
Can be mounted in any orientation, although valve horizontal with actuator mounted above preferred. Valve ends are flanged PN16 or ASA150. Actuator supply air connections are 1/4" or 1/2" BSP depending on size. CAUTION: These assemblies are heavy, ensure that correct lifting gear is available when installing.

Dimensions:

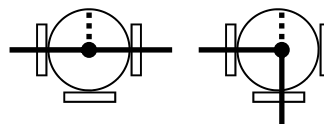
Call for details



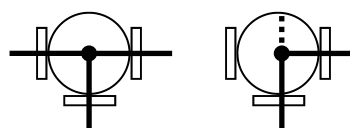
Flow Options: L Port



Flow Options: T Port



Flow Type 1: Straight & divert



Flow Type 2: Mix & divert

LH Flow Path : RH Flow Path
Actuator closed : Actuator open